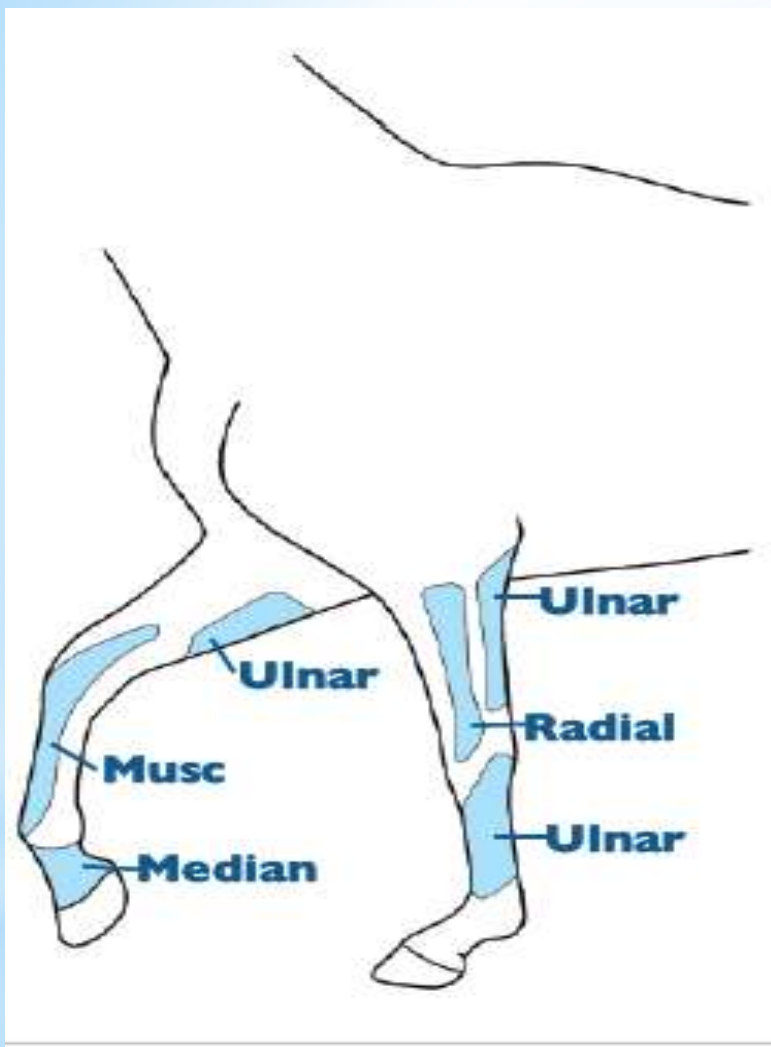


# \* Nerve Supply to the Antebrachium

Also called the forearm

\* The antebrachium refers to the area of the forearm consisting of the radius & ulna



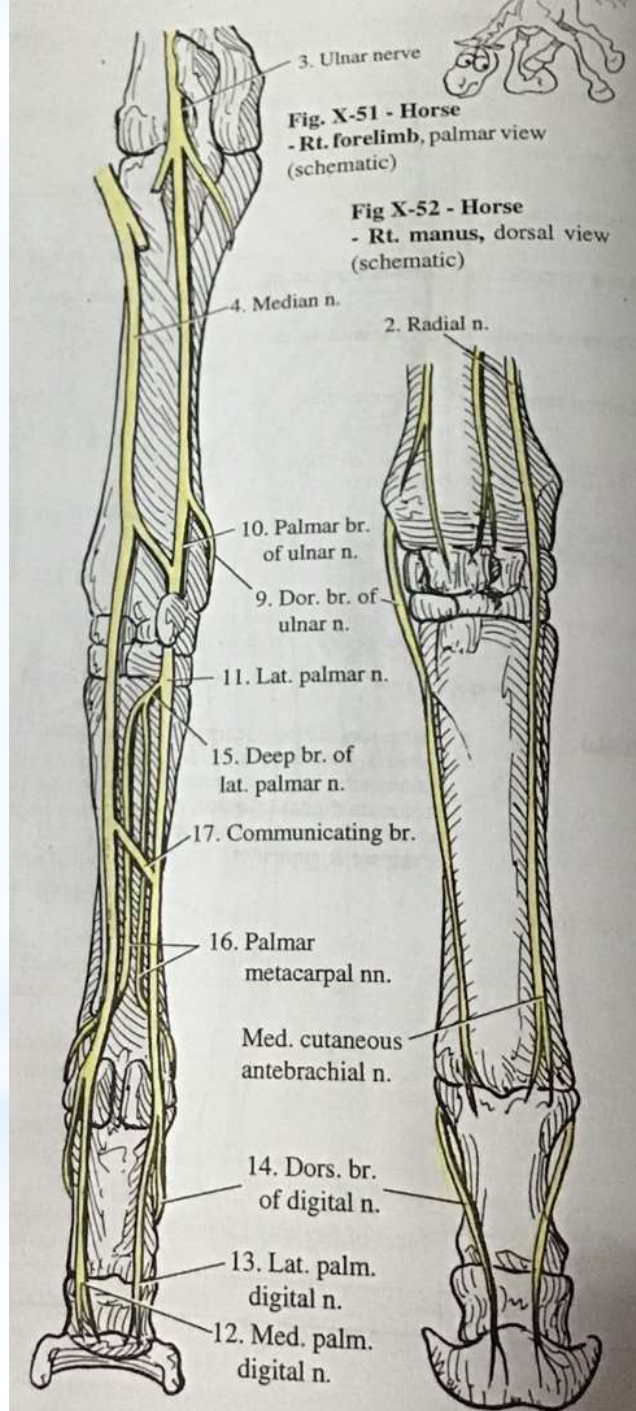


- In the horse, the radial nerve does not extend beyond the carpus (there is also no superficial branch vs other spp)
- The nerves that do extend beyond the carpus are:
  - Median n.
  - Ulnar n.
  - Median cut. branch of the Musculocutaneous n.

Nerves of course through the antebrachium are:

➤ Radial Nerve: give motor innervation to:

- Triceps brachii m.
- Anconeus m.
- Tensor fascia antebrachii
- Extensor carpi radialis m.
- Common digital extensor m
- Lateral digital extensor m.
- Lateral ulnar m.
- Oblique carpal extensor m.
- Supinator m.



- Ulnar Nerve:
    - Caudal cutaneous br. & Dorsal br. give sensory innervation to the caudal aspect of the forearm
  
  - Median Nerve:
    - Motor innervation to:
      - Flexor carpi radialis m.
      - Deep digital flexor m.
- NB: the median nerve can be palpated as it passes over the collateral ligament of the elbow
- Sensory innervation to:
    - Caudal aspect of the forearm

