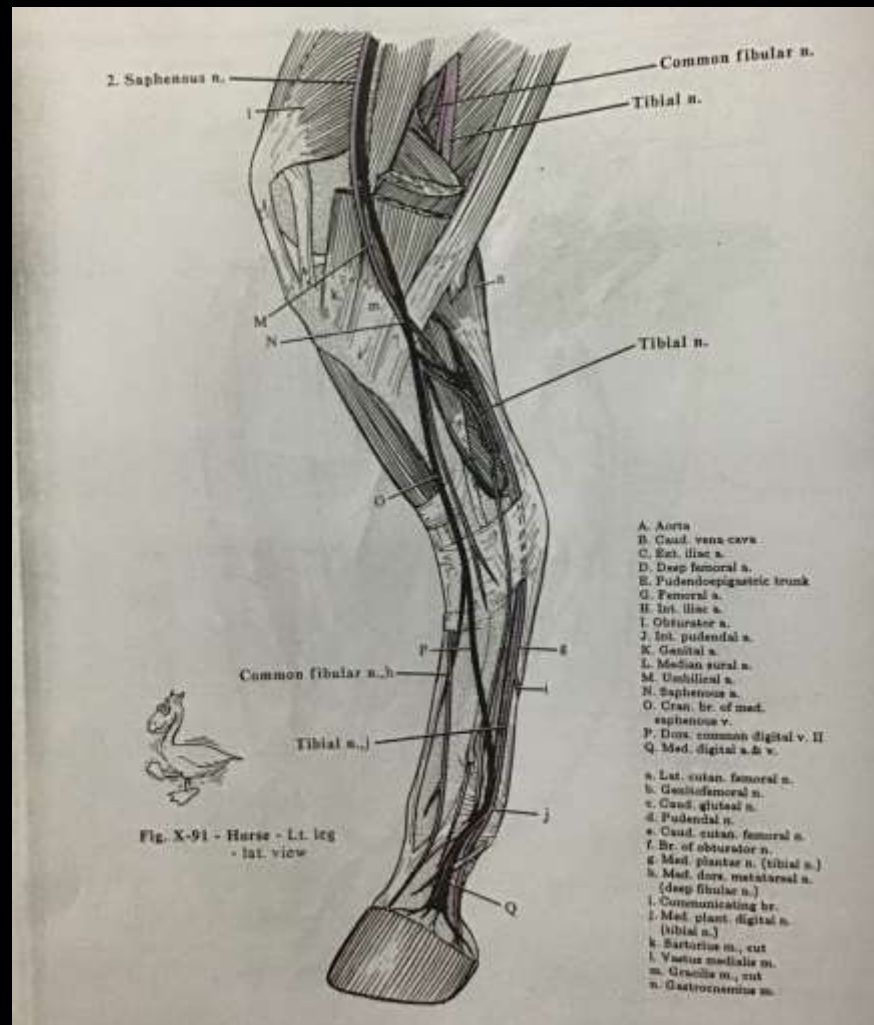


THE SCIATIC (ISCHIATIC) NERVE

COURSE & BRANCHES OF THE SCIATIC NERVE



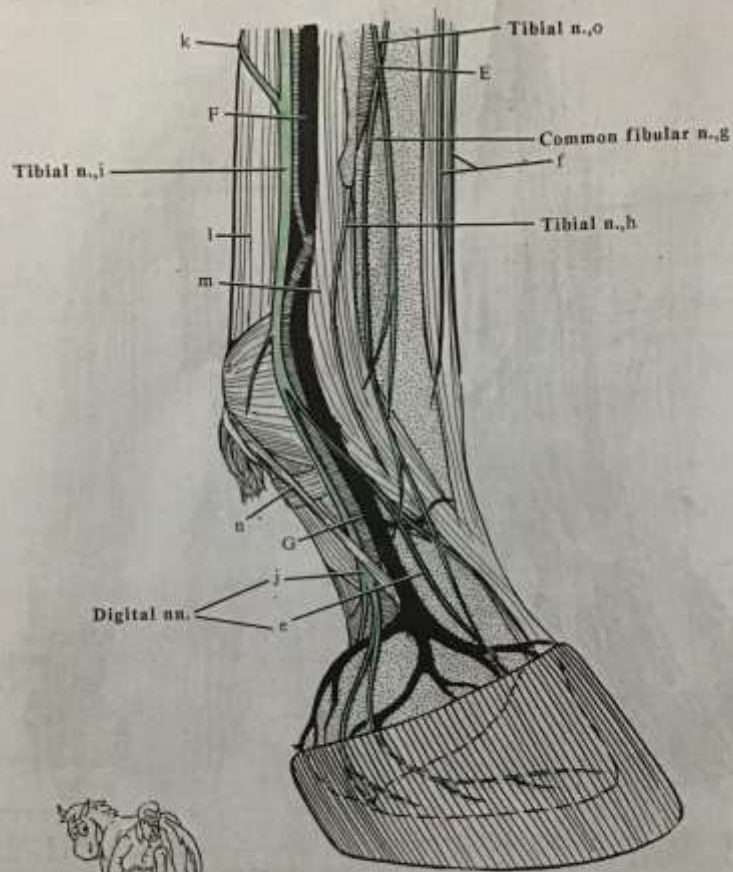


Fig. X-98 - Horse - Rt. hindfoot - lat. view

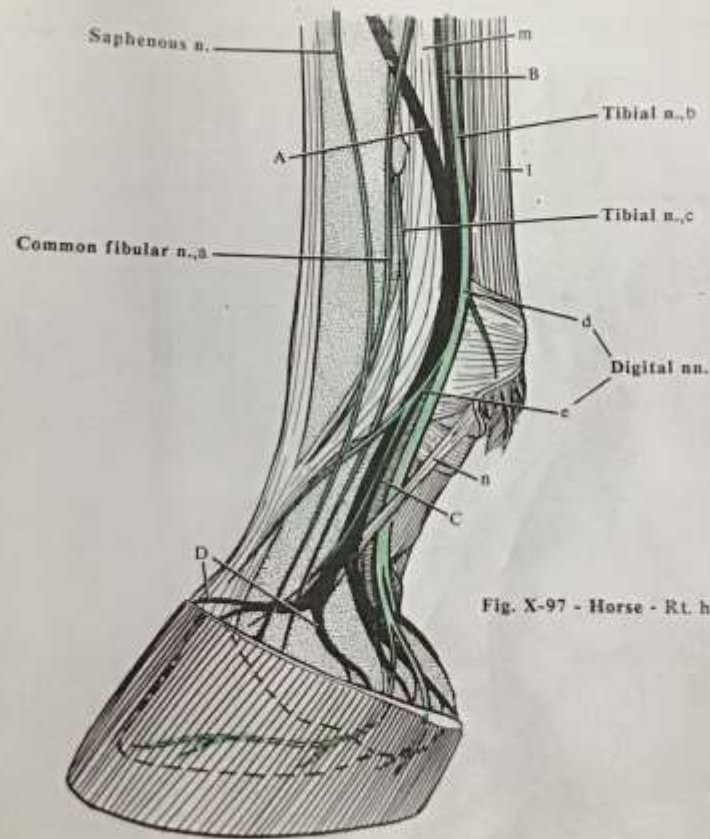


Fig. X-97 - Horse - Rt. hindfoot - med. view

A. Dors. common digital v. II
(med. saphenous v.)
B. Med. plantar a.
C. Med. plant. digital a. & v.
D. Coronary venous plexus
E. Dors. metatarsal a.
F. Lat. plantar v.
G. Med. plant. digital a. & v.

a. Med. dors. metatarsal n.
(deep fibular n.)
b. Med. plantar n. (tibial n.)
c. Med. plant. metatarsal n.
(deep br. of lat. plantar
n., tibial n.)
d. Med. plantar digital n.
e. Dorsal br.

f. Supf. peroneal n.
g. Lat. dors. metatarsal
(deep fibular) n.
h. Lat. plant. metatarsal n.
(deep br. of lat. plant.
n., tibial n.)
i. Lat. plantar n. (tibial n.)
j. Lat. plant. digital n.

k. Communicating
branch
l. Supf. digital
flexor m.
m. Suspensory lig.
n. Lig. of ergot

NERVE	MOTOR INNERVATION TO...	SENSORY INNERVATION TO...
Sciatic	<ul style="list-style-type: none"> • Deep gluteal m. • Internal Obturator m. • Gemili mm. 	
➤ Common Fibular br.	<ul style="list-style-type: none"> • Biceps femoris m. 	
➤ Lateral cutaneous sural br.		<ul style="list-style-type: none"> • Lateral aspect of the leg
➤ Superficial fibular br.	<ul style="list-style-type: none"> • Lateral digital extensor m. 	<ul style="list-style-type: none"> • Dorsal aspect of crus till the fetlock
➤ Deep fibular br.	<ul style="list-style-type: none"> • Cr. tibial • Third fibular • Long digital extensor • Lateral digital extensor • Short digital extensor 	
➤ Tibial	<ul style="list-style-type: none"> • Biceps femoris • Semitendinous & membranousus • Gastrocnemius • Popliteal • Superficial & Deep digital flexor 	
▪ Caudal cutaneous sural br.		<ul style="list-style-type: none"> • Caudal aspect of the crus
▪ Medial plantar br.		<ul style="list-style-type: none"> • Medioplantar surface of the metatarsus & the medial aspect of the digit
▪ Lateral plantar br.	<ul style="list-style-type: none"> • Interosseus m. 	<ul style="list-style-type: none"> • Lateroplantar surface of the metatarsus & the lateral aspect of the digit

