

# X-RAYS

Radiography is the main imaging diagnostic used to observe bone. Electromagnetic waves are used to penetrate a body to create a picture. More than 1 view is needed to appreciate the 3C structures present in the body. Examples of diagnoses that could be made via radiographic interpretation are chronic arthritis and fractures.

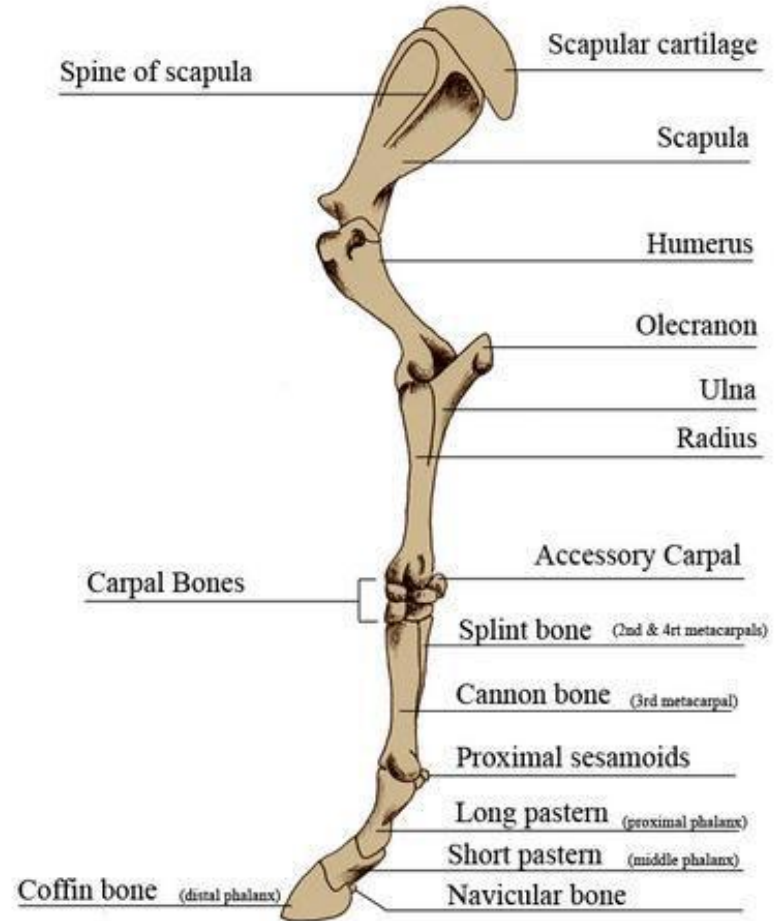
Due to the size of a horse, a portable X-ray machine is used.



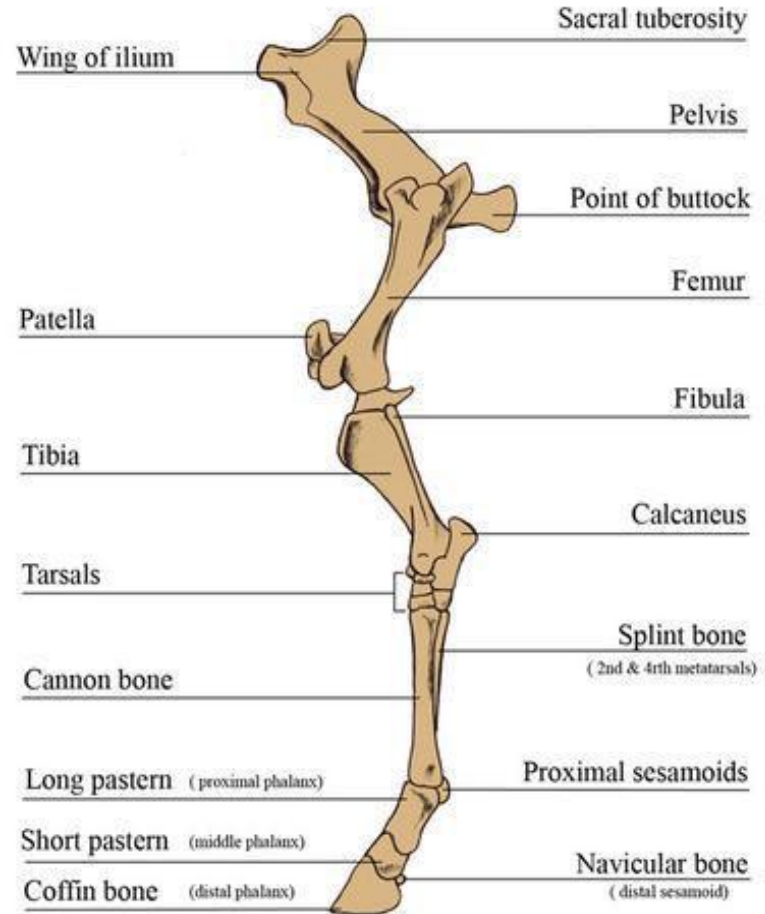
# Notable Points:

- Turn your system on and calibrate it if needed.
- Input your patient's details when the animal is about to be sedated.
- Ensure that you and personnel are wearing lead aprons and this procedure is being done in a safe environment.
- REMEMBER: This procedure should have minimal stress on both the animal and relevant personnel.
- It is also important to note that one must be familiar with the normal anatomy of the animal, they wish to X ray.

# The Forelimb



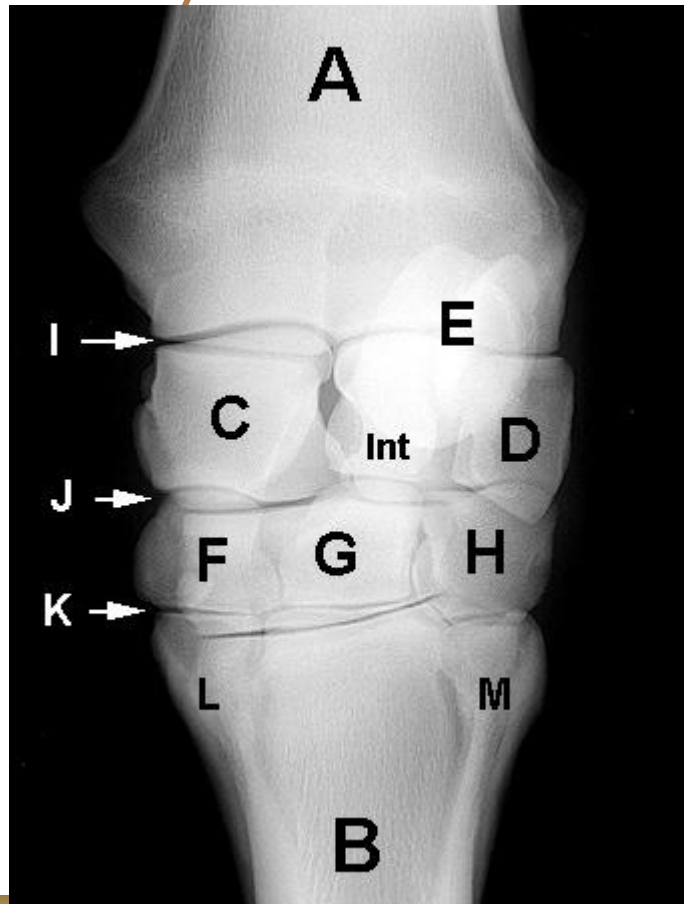
# The Hindlimb



# The following video links explain taking an Xray for a horse's limb:

- The carpus: <https://www.youtube.com/watch?v=W829mCi-JBw>
- The fetlock: <https://www.youtube.com/watch?v=u31r41vDX7o>
- The tarsus: <https://www.youtube.com/watch?v=PKF6vIcJAXY>
- The foot: <https://www.youtube.com/watch?v=mIBubgHvrbl>

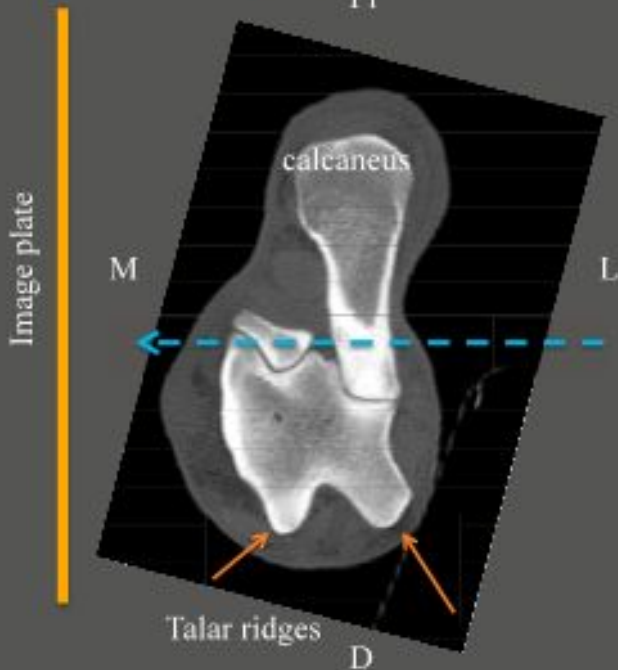
# Examples of X rays of a horse's limb.



# Lateromedial projection

*flexion*

PI



CT images of normal tarsus courtesy of DE Thrall, NC State



# EPC SOLUTIONS HOOVESANDHORSES.COM

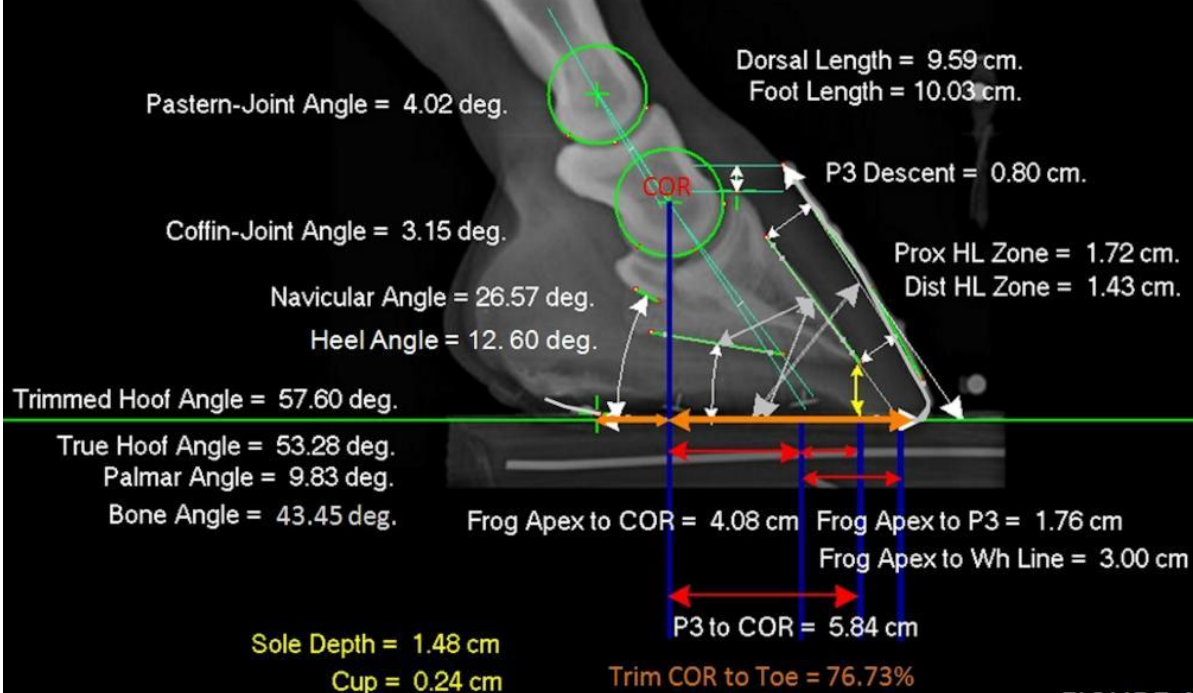


FIGURE A