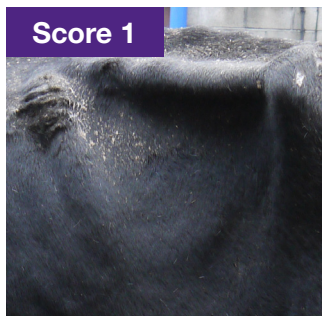


# Rumen Fill Scoring

Rumen fill is the result of dry matter intake, ration composition and digestion and the rate of passage of ingested feed. Rumen fill scoring is useful for identifying possible feeding and feed intake problems.



Focus area



Score 1

## How to score

- Deep dip in left flank, more than one hand-width deep after rib.
- Skin curves under lumbar vertebrae one hand's width.
- Skin fold from hook bone falls vertically, so hollow shape looks rectangular.

### For example

This cow has eaten nothing in the last 24 hours.



Score 2

## How to score

- Dip in left flank, one hand width deep after last rib.
- Skin curves under lumbar vertebrae, half a hand's width.
- Skin fold from hook bone runs diagonally, so hollow shape looks like a triangle.

### For example

Not unusual in 1st week after calving, but after that, it signifies a problem/too little intake.



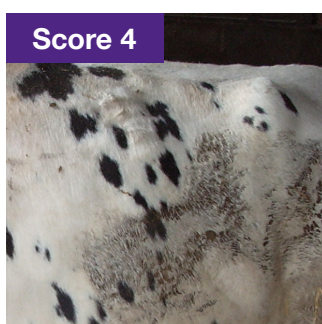
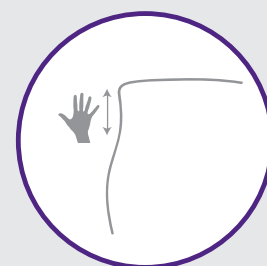
Score 3

## How to score

- Slight dip visible in left flank, after last rib.
- Skin under lumbar vertebrae runs vertically down for one hand's width before bulging out slightly.
- Skin fold from hook bone is hardly visible.

### For example

This is desired score for milking cows having sufficient intakes.



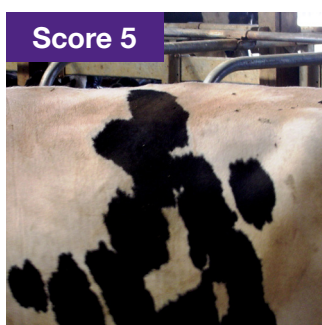
Score 4

## How to score

- No dip is visible in left flank, after last rib.
- Skin under lumbar vertebrae curves outwards.
- Skin fold from hook bone is not visible.

### For example

This is correct score for milking cows at the end of lactation and through the dry period. It is the target minimum score for pre-calvers.



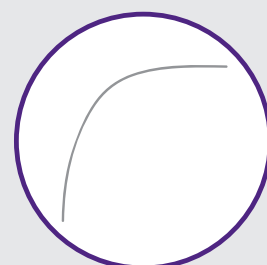
Score 5

## How to score

- Skin is flat, or slightly bulging, on left flank, after last rib.
- Skin under lumbar vertebrae curves outwards, so that bones are not visible.
- The skin over the whole belly is quite tight, and there is no visible transition between the flank and the ribs.

### For example

This score is often seen in dry cows.



Adapted from Dairy Veterinary Consultancy Ltd Rumen Fill Scorecard, 2014

For Further Information please contact: Elanco Animal Health, Lilly House, Priestley Road, Basingstoke, Hampshire, RG24 9NL United Kingdom. Telephone: +44 1256 353131. Elanco, V90 and the diagonal bar are trademarks owned or licensed by Elanco or its affiliates. © 2018 Elanco or its affiliates. UKDRYRUH00037(1)

**Elanco**