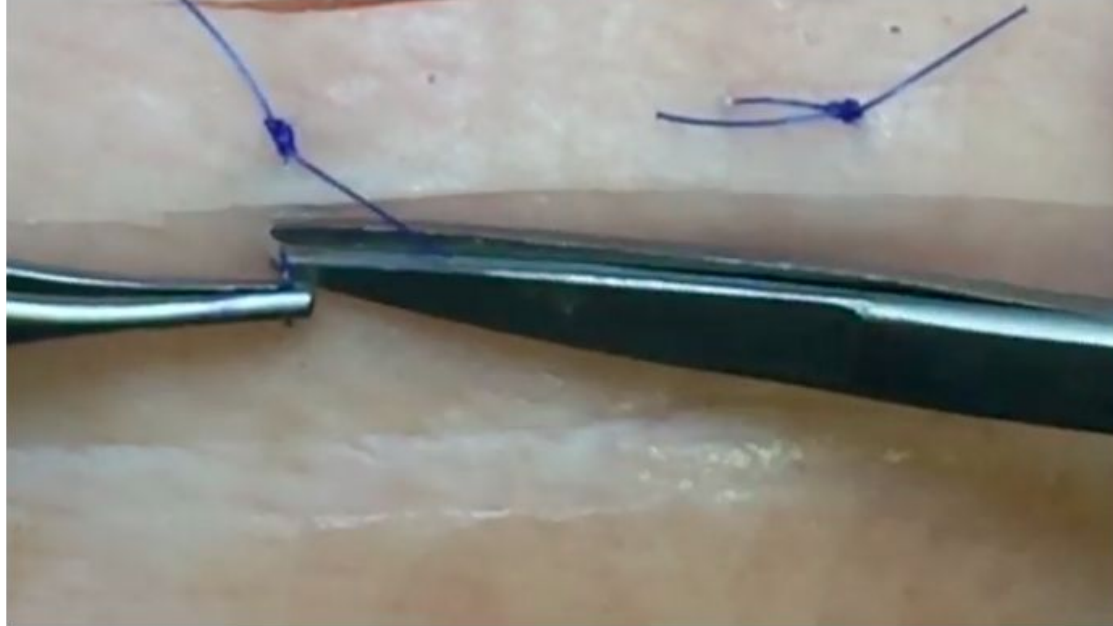


**Routine care,  
nursing and  
inspection**

**Sutures should be removed on day 10 after the operation.**



[https://www.youtube.com/watch?v=\\_M\\_rDhPVIMY](https://www.youtube.com/watch?v=_M_rDhPVIMY)

**A self-retaining teat tube, such as a Larson's teat tube, can be inserted for approximately 1 week. Remove the cap of the tuben to permit drainage from the quarter in focus, while the other quarters are being milked. Do not hand-milk the teat. Regular drainage of the teat is necessary so that pressure is not placed on the sutures.**



## **Intramammary antibiotics and systemic antibiotics must be administered.**

- The client should monitor the animal.
- Any abnormalities like pus/discoloration/smell around the incision site should reported to the veterinarian.