

Jorgensen Laboratories, Inc.

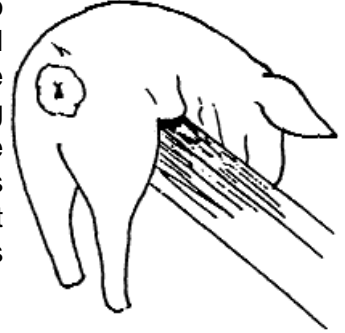
Loveland, Colorado 80538

Rectal Rings for the repair of rectal prolapses

A. Select proper size ring. Ring size may vary with the size of the animal and the length of the time the prolapse has been out.



B. Proper restraint of animal must be used to ensure proper placement of ring. The animal should be placed on its stomach and the hindquarters elevated. For small swine, placing them on a fence and pulling down on the hindlegs will accomplish this. In larger hogs and cattle, the legs should be pulled straight back. Sedation to prevent straining or motion is advised in swine.



C. Lubricate ring with vaseline or KY Jelly and insert to a point where the center cut groove lies just outside the anus. The ring may be held steady with a surgical forceps or needle nose pliers.



D. The prolapse section is now tied off with either umbilical tape (JorVet #J 27-UA), nylon cord or an elastor ring (only on small sizes). In larger animals more than one tie should be used. The tie must be tight enough to completely shut off circulation of the protruding portion.

E. Isolate the animal to avoid cannibalism. The tied off prolapse should slough off in 5-7 days.

If all directions are followed closely, the animal will return to normal function. If problems develop or if unsure of procedure always consult your veterinarian.

O.D., length

J-155A	1/2" x 2"	20-30 lbs.
J-155B	5/8" x 2"	30-40 lbs.
J-155C	3/4" x 2"	40-50 lbs.
J-155D	7/8" x 2"	50-60 lbs.
J-155E	1" x 2"	70-80 lbs.
J-155F	1 1/4" x 3"	90-140 lbs.
J-155G	1 1/2" x 3"	150-220 lbs.
J-155H	2" x 4"	300 lb. calves & mature hogs