

# Relevant Anatomy



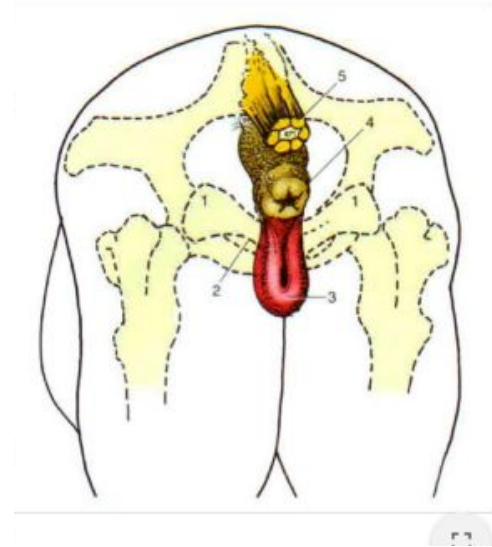
# The Perineum

A surface region in both males and females closing the pelvic outlet and surrounding the anal and urogenital canals. Consists of muscular wall and its associated structures.

Superficial boundaries:

- Dorsal: base of tail
- Lateral: sacrotuberous ligament

The scrotum is included in the perineal region.



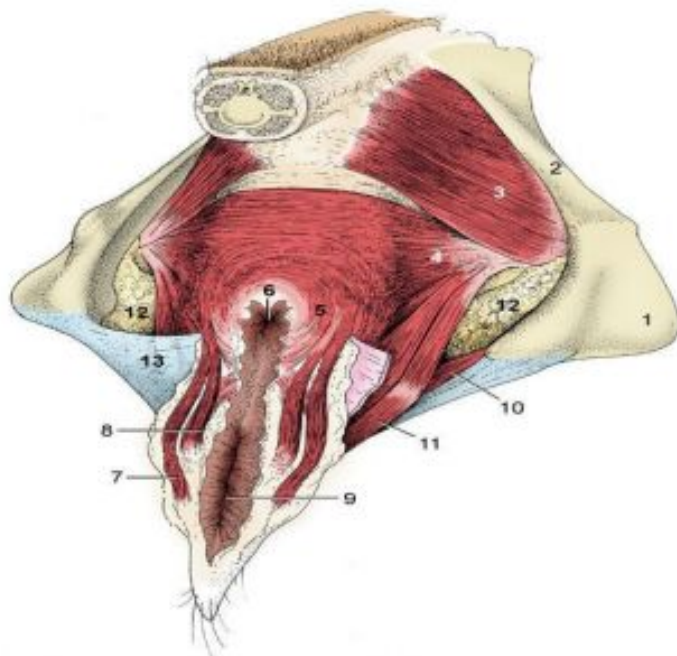
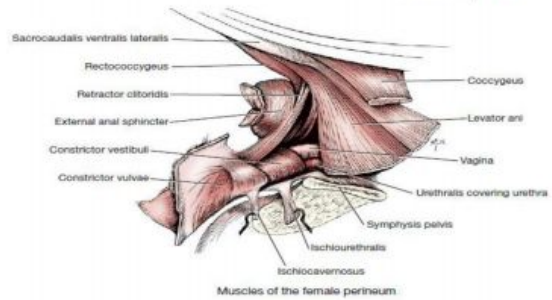
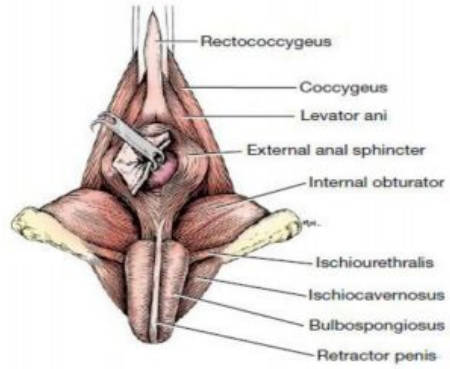
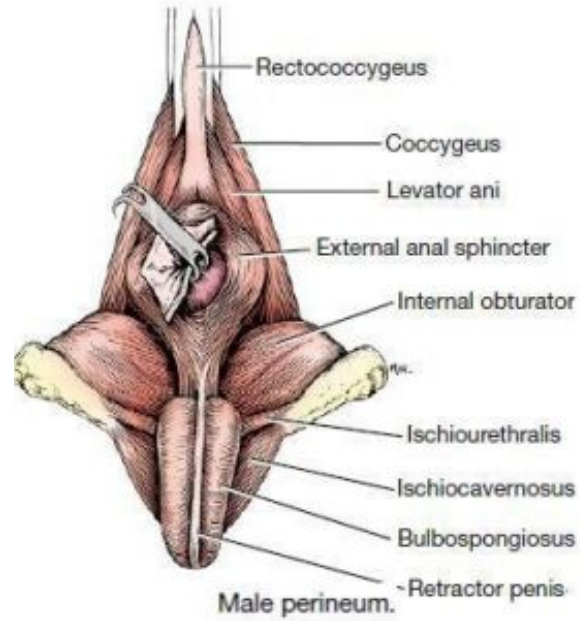
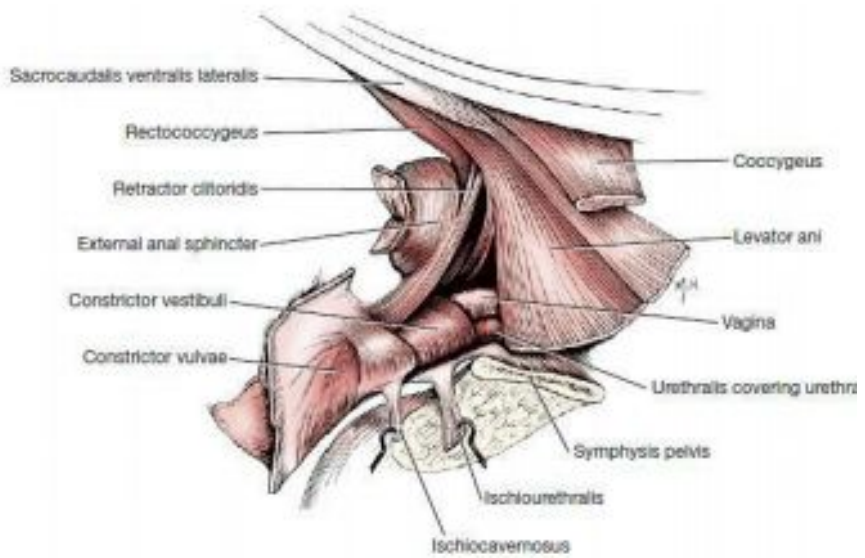


Fig. 29-10. The perineal muscles of a cow: 1, ischial tuber; 2, sacrospinous ligament; 3, coccygeus; 4, levator ani; 5, external anal sphincter; 6, anus; 7, retractor clitoridis; 8, constrictor vulvae; 9, vulva; 10, urogenital diaphragm; 11, constrictor vestibuli; 12, fat in ischiorectal fossae; 13, perineal fascia (partly removed on the right side).

Copyright © 2010 by Saunders, an imprint of Elsevier Inc.







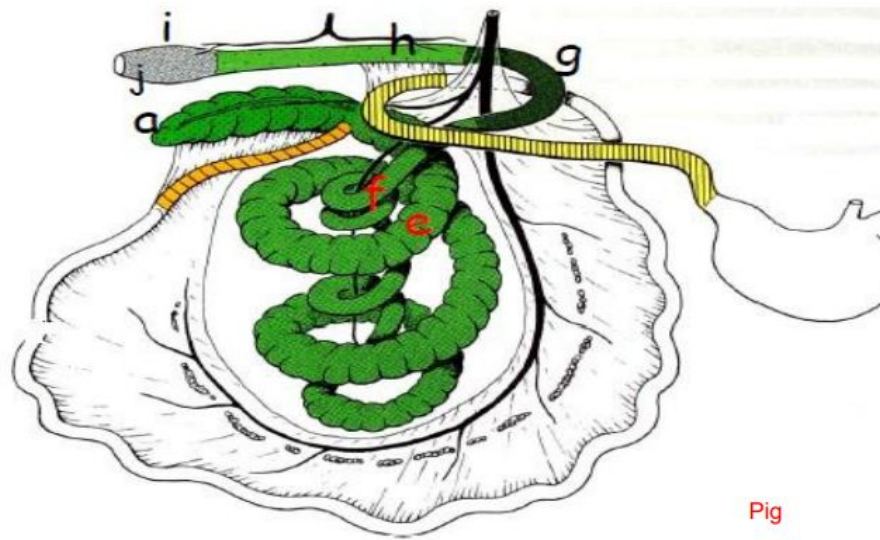
Muscles of the female perineum

The external anal sphincter is a striated muscle under voluntary control encircling the anal canal.

The perineal body is an aggregate of fibrous and muscular tissue between the anus and vulva/bulb of the penis.



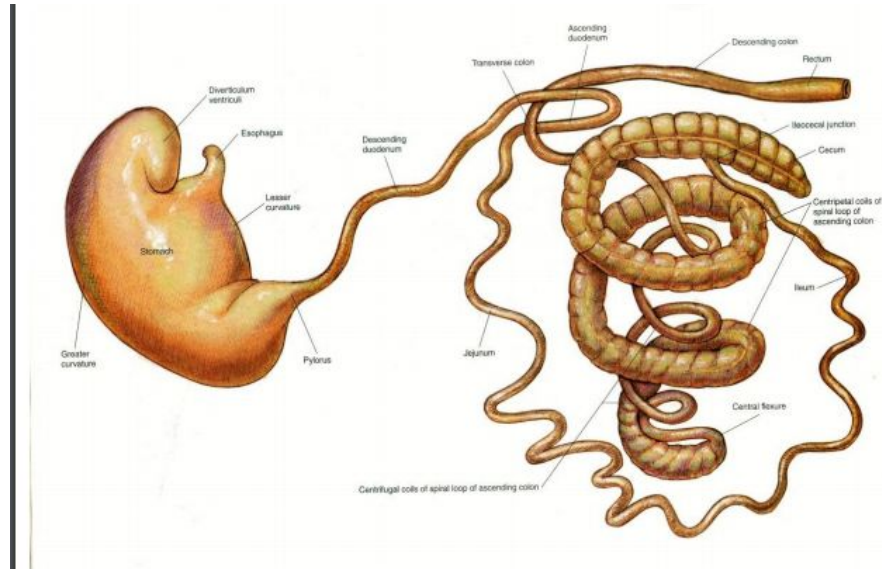
# The Intestinal Arrangement



- a. Cecum; b. Colon; c. Ascending colon; d. Ansa spiralis; e. Centripetal gyri;  
f. Centrifugal gyri; g. Transverse colon; h. Descending colon; i. Rectum;  
j. Anal canal



# Diagram illustrating the stomach and intestines of the swine



# The Rectum

- Direct continuation of the descending colon at the pelvic inlet
- Peritoneal part: Same diameter of the descending colon.
- Retroperitoneal part: Dilates to form the rectal ampulla. Fixed by connective tissue.
- The rectum is fixated by the mesorectal ligament and the rectoduodenal ligament.



# The Anus

- Terminal part of the intestinal tract. Situated ventral to caudal vertebrae and lined by thick, hairless pigmented skin.
- Muscles:
  - External anal sphincter
  - Internal anal sphincter
  - Retractor muscle of the annus or levator ani muscle
- The suspensory ligament is a band of smooth muscle fibres that assist in the external and internal anal sphincters.

# The Rectoanal Portion

- Cutaneous zone: Covered with skin, Presents on each side with a small opening that leads into a small sac. This sac is lined by mucous membrane and has anal sac glands which aids in identifying the individual since the stool has a foul smell.
- Intermediate zone: Narrow zone situated between the cutaneous and columnar zone
- Columnar zone: Presents a number of longitudinal folds or columns that contain the anal glands.



MAYBE NEXT TIME YOU'LL  
TRY A LITTLE SUNSCREEN...

